

STUFFED GNOCCHI MACHINE & MORE!

GEMELLA



ARCOBALENO®
PASTA MACHINES

AEF150

I'M STUFFED!



STANDARD FEATURES

- Machine equipped to manufacture stuffed gnocchi, additional products will require optional accessories
- For the production of stuffed products such as gnocchi, biscuits and savory
- Ideal machine for pasta, pastry and bakery shops
- Touch screen controls with pre-set recipes and programmable recipe storage
- AEF150 machine cart included

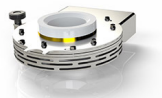


- Factory and on-location training. The Only Full-Service Pasta Machine Manufacturer in North America!

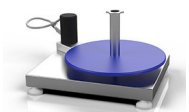
OPTIONAL ACCESSORIES



- ☐ Conveyor Belt



- ☐ Diaphragm cutting system
 - Ideal for soft, sticky, and delicate food products
 - Cuts round shaped portions



- ☐ Rotating Plate



- ☐ Oil Device
- ☐ Flour Duster
- ☐ Dough Nozzle (each sold separately):
28mm, 36mm or 48mm
- ☐ Stuffing Nozzle/Filling Injector Nozzle (each sold separately):
12mm or 15mm

- ☐ Decorative Rollers
Striped, smooth & inclined



Shown with optional diaphragm cutting system, optional conveyor belt, and optional oil device

STUFFED GNOCCHI MACHINE & MORE!



AEF150

TECHNICAL SPECIFICATIONS

Model	AEF150
Hourly Production	Up to 154 lbs
Dough + Filling Tank Capacity	11 lbs + 11 lbs
Dough Extrusion Diameter	0.59" - 2.36"
Filling Injection Diameter	0.31" - 1.57"
Electrical Power	120V 50/60Hz 14 Amps
Machine Dimensions	29"W x 30"D x 36"H
Machine Dimensions (with Cart and Conveyor Belt)	36"W x 36"D x 68"H
Shipping Dimensions (with Cart and Conveyor Belt)	33"W x 42"D x 73"H
Machine Weight	322 lbs
Shipping Weight	500 lbs
Shipping Class	125



Optional diaphragm cutting system, optional conveyor belt, and optional decorative rollers

■ WARRANTY

One Year: For more information visit arcobalenollc.com/warranty.html



■ TRY BEFORE YOU BUY

In an effort to ensure success, we maintain a test kitchen where you can have your very own recipe tested for quality! Call for details.



CAD file available on KCL or contact factory 717-394-1402. | Specifications subject to change without notice | © Copyright 2025 Arcobaleno® Pasta Machines, LLC

160 GREENFIELD ROAD | LANCASTER, PA 17601 | ARCOBALENOPASTA.COM | 717.394.1402

@ARCOBALENOPASTA