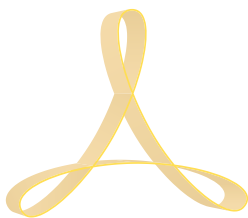


GEMELLA



A R C O B A L E N O™

STUFFED GNOCCHI MODEL AEF150

I'M STUFFED!

Project: _____

Item #: _____

Qty: _____

CSI Section 11400: _____

Approval: _____

Date: _____

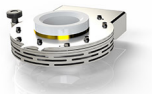
STANDARD FEATURES

- Machine equipped to manufacture stuffed gnocchi, additional products will require optional accessories
- For the production of stuffed products such as gnocchi, biscuits and savory
- Ideal machine for pasta, pastry and bakery shops
- Factory and on-location training—the only full-service pasta machine manufacturer in North America

OPTIONAL ACCESSORIES



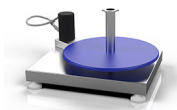
☐ Cart



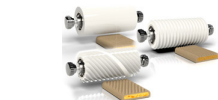
☐ Guillotine Cutting Group



☐ Conveyor Table



☐ Rotating Plate



☐ Decorative Rollers
Striped, smooth & inclined



Shown with
optional cart,
guillotine cutting
group and
conveyor table

■ WARRANTY

One Year: For more information
visit arcobalenollc.com/warranty.html

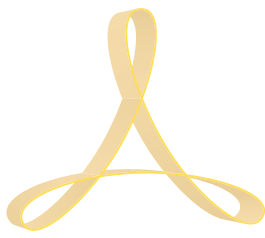


■ TRY BEFORE YOU BUY

In an effort to ensure success, we maintain a test kitchen where you can have your very own recipe tested for quality — at NO COST to you! Call for details.



Specifications subject to change without notice due to policy of continuous product improvement.



STUFFED GNOCCHI MODEL AEF150

FILL IT UP!

ARCOBALENO™

TECHNICAL SPECIFICATIONS

Model	AEF150
Hourly Production	Up to 154 lbs
Dough + Filling Tank Capacity	11 lbs + 11 lbs
Dough Extrusion Diameter	0.59" - 2.36"
Filling Injection Diameter	0.31" - 1.57"
Electrical Power	120V 14 Amps
Machine Weight	322 lbs
Machine Dimensions	28"W x 32"D x 36"H
Machine Dimensions w/Conveyor Belt	33.50"W x 32"D x 36"H
Machine Dimensions w/ Cart	28"W x 32"D x 64"H

