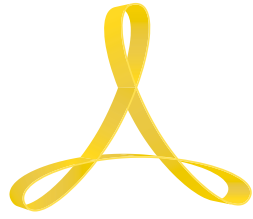


PASTA COOKER | COUNTER TOP MODEL APCED25/33

DROP IN PASTA COOKER

DROPINI



ARCOBALENO™

Project: _____

Item #: _____

Qty: _____

CSI Section 11400: _____

Approval: _____

Date: _____



STANDARD FEATURES

- Versatile pasta cooker; cook fresh, dry foods, vegetables & more
- Stainless steel rounded corners rear backsplash construction - sanitary finish
- 316 stainless steel cooking tank
- 4 position temperature control
- Water safety sensor
- Built in water fill tap, overflow safety valve and floor drain
- Perforated pasta baskets with safety handles, available in different sizes for multiple product cooking
- Factory and on-location training—the only full-service pasta machine manufacturer in North America



APCED25



APCED33

OPTIONAL FEATURES & ACCESSORIES

- Pasta trays
- Variety of pasta basket combinations
- Automatic water fill (Model APCEDW25/33)

WARRANTY

One Year: For more information visit arcobalenollc.com/warranty.html



TRY BEFORE YOU BUY

In an effort to ensure success, we maintain a test kitchen where you can have your very own recipe tested for quality —at NO COST to you! Call for details.



Specifications subject to change without notice due to policy of continuous product improvement.



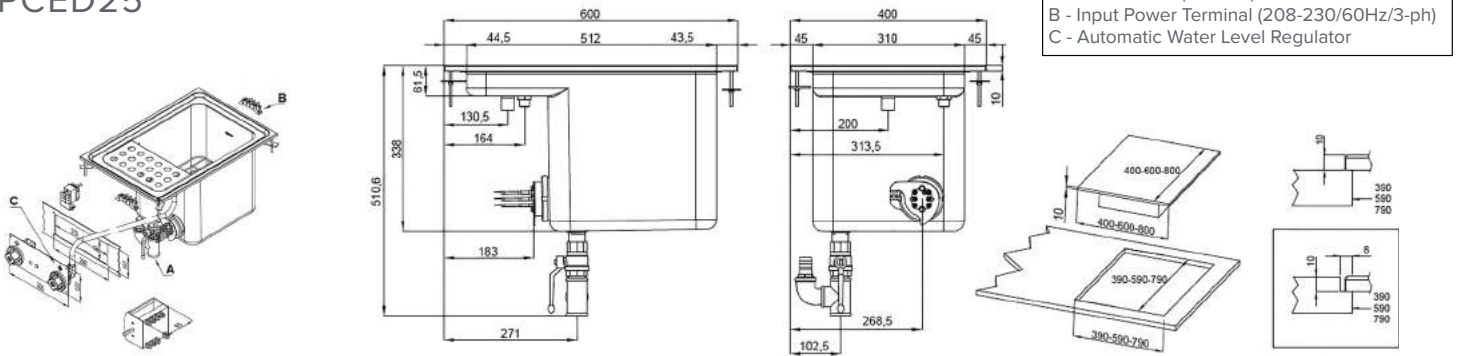
PASTA COOKER | COUNTER TOP MODEL APCED25/33

ARCOBALENO™

TECHNICAL SPECIFICATIONS

Model	APCED25	APCED33
Tank	1	1
Tank Volume	5 gallon	11 gallon
Power (Electric Only)	208-230V/60Hz/3-ph, 7.8kW Actual amp draw: 22 Amps @ 208V Min. circuit ampacity (draw plus 20% safety factor): 26 Amps @ 208V	208-230V/60Hz/3-ph, 13.5kW Actual amp draw: 38 Amps @ 208V Min. circuit ampacity (draw plus 20% safety factor): 45 Amps @ 208V
Water Connection	FNPT 1/2"	FNPT 1/2"
Water Drainage	FNPT 1"	FNPT 1"
Machine Dimension	15.75"W x 25.25"D x 20"H	15.75"W x 31.50"D x 20"H
Tank Dimension	12"W x 13"D x 13"H	12"W x 20"D x 13"H
Net Weight	49 lbs	66 lbs
Shipping Weight	60 lbs	75 lbs
Shipping Class	85	85

APCED25



APCED33

