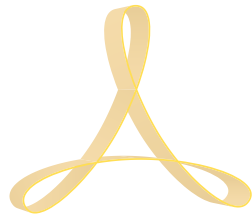


PASTA COOKER | COUNTER TOP MODEL APCEDW25

DROP IN PASTA COOKER

DROPINI



A R C O B A L E N O™

Project: _____

Item #: _____

Qty: _____

CSI Section 11400: _____

Approval: _____

Date: _____



STANDARD FEATURES

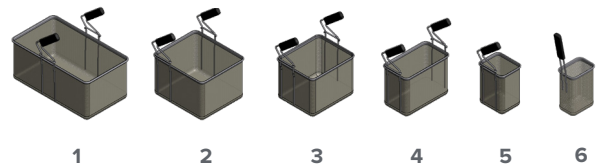
- Automatic water fill
- Versatile pasta cooker; cook fresh, dry foods, vegetables & more
- Stainless steel rounded corners rear backsplash construction - sanitary finish
- 316 stainless steel cooking tank
- 4 position temperature control
- Water safety sensor
- Built in water fill tap, overfill safety valve and floor drain
- Perforated pasta baskets with safety handles, available in different sizes for multiple product cooking
- Factory and on-location training—the only full-service pasta machine manufacturer in North America

OPTIONAL FEATURES & ACCESSORIES

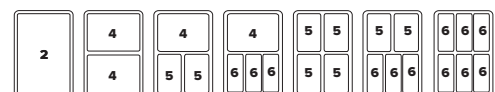
- ☐ Pasta trays
- ☐ Variety of pasta basket combinations



Pasta Basket Options



APCEDW25 Pasta Basket Combinations



■ WARRANTY

One Year: For more information visit arcobalenollc.com/warranty.html

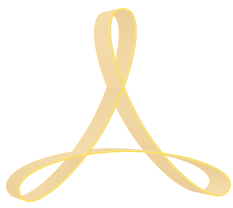


■ TRY BEFORE YOU BUY

In an effort to ensure success, we maintain a test kitchen where you can have your very own recipe tested for quality —at NO COST to you! Call for details.



Specifications subject to change without notice due to policy of continuous product improvement.

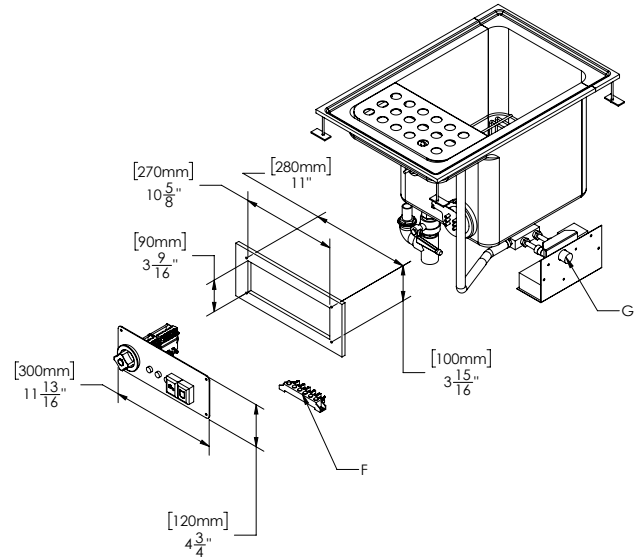


PASTA COOKER | COUNTER TOP MODEL APCEDW25

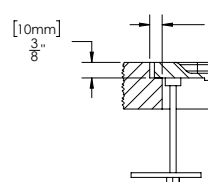
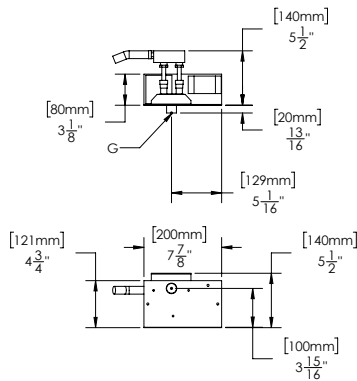
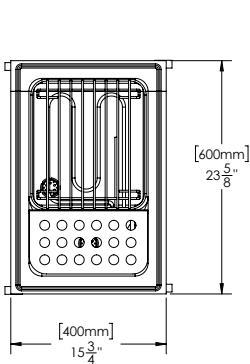
ARCOBALENO™

TECHNICAL SPECIFICATIONS

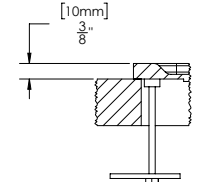
Model	APCEDW25
Tank	1
Tank Volume	5 gallon
Power (Electric Only)	208-230V/60Hz/3-ph, 7.8kW Actual amp draw: 22 Amps @ 208V Min. circuit ampacity (draw plus 20% safety factor): 26 Amps @ 208V
Water Connection	FNPT 1/2"
Water Drainage	FNPT 1"
Machine Dimension	15.75"W x 25.25"D x 20"H
Tank Dimension	12"W x 13"D x 13"H
Net Weight	49 lbs
Shipping Weight	60 lbs
Shipping Class	85



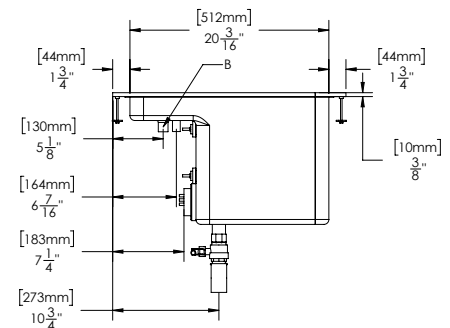
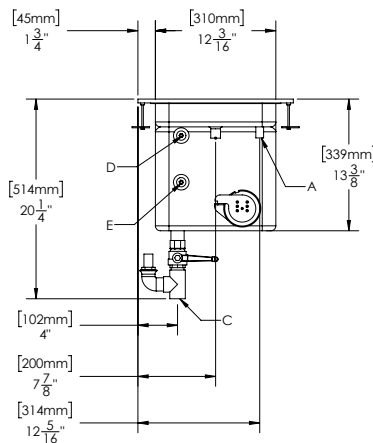
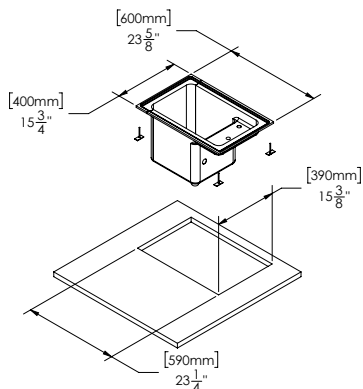
A - Water Inlet
B - Overflow Drain
C - Bottom Drain - 1" FNPT
D - High Water Level Sensor
E - Low Water Level Sensor
F - Electrical Connection - 230V 3PH 50/60HZ
G - Water Connection - 1" FNPT



ROUTERED EDGE
15.984(406) x 23.858(606)
CUT DEPTH 0.393(10)
HOLE DIM. 15.354(390) x 23.228(590)



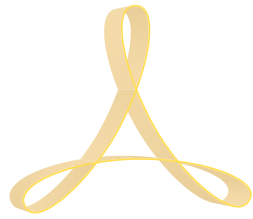
NON ROUTERED EDGE
HOLE DIM. 15.354(390) x 23.228(590)



PASTA COOKER | COUNTER TOP MODEL APCEDW33

DROP IN PASTA COOKER

DROPINI



A R C O B A L E N O™

Project: _____

Item #: _____

Qty: _____

CSI Section 11400: _____

Approval: _____

Date: _____



STANDARD FEATURES

- Automatic water fill
- Versatile pasta cooker; cook fresh, dry foods, vegetables & more
- Stainless steel rounded corners rear backsplash construction - sanitary finish
- 316 stainless steel cooking tank
- 4 position temperature control
- Water safety sensor
- Built in water fill tap, overfill safety valve and floor drain
- Perforated pasta baskets with safety handles, available in different sizes for multiple product cooking
- Factory and on-location training—the only full-service pasta machine manufacturer in North America

OPTIONAL FEATURES & ACCESSORIES

- ☐ Pasta trays
- ☐ Variety of pasta basket combinations

■ WARRANTY

One Year: For more information visit arcobalenollc.com/warranty.html

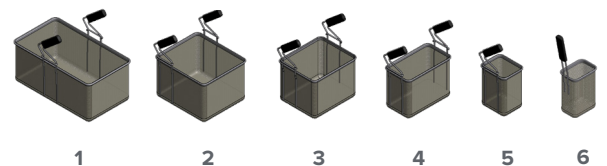


■ TRY BEFORE YOU BUY

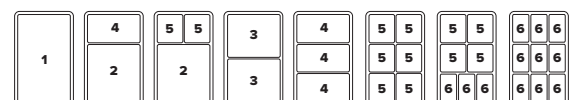
In an effort to ensure success, we maintain a test kitchen where you can have your very own recipe tested for quality —at NO COST to you! Call for details.



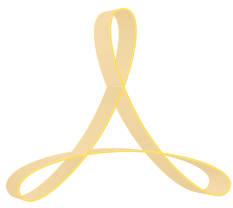
Pasta Basket Options



APCEDW33 Pasta Basket Combinations



Specifications subject to change without notice due to policy of continuous product improvement.

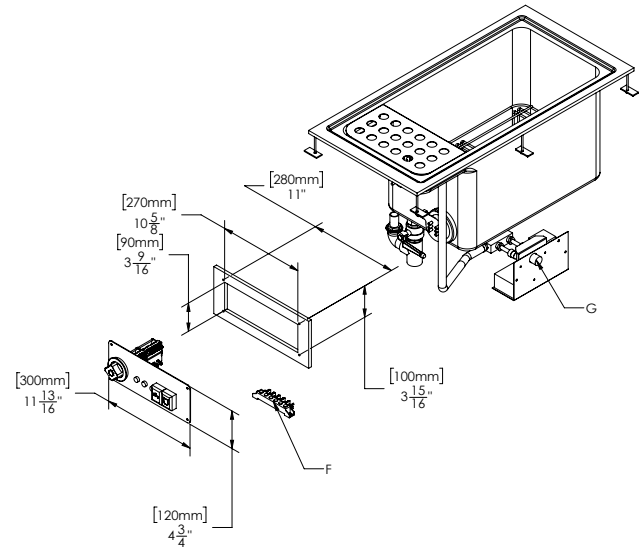


PASTA COOKER | COUNTER TOP MODEL APCEDW33

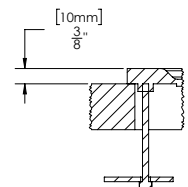
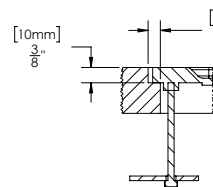
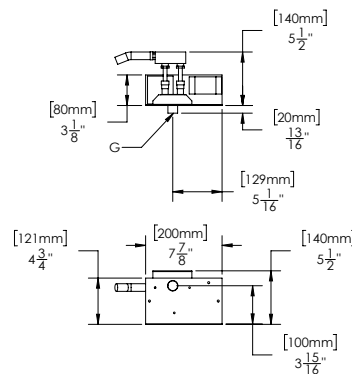
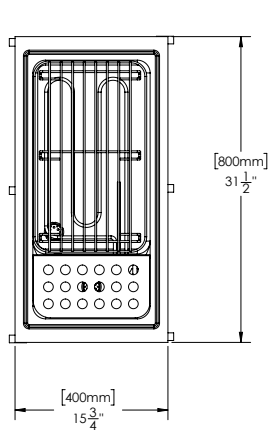
ARCOBALENO™

TECHNICAL SPECIFICATIONS

Model	APCEDW33
Tank	1
Tank Volume	11 gallon
Power (Electric Only)	208-230V/60Hz/3-ph, 13.5kW Actual amp draw: 38 Amps @ 208V Min. circuit ampacity (draw plus 20% safety factor): 45 Amps @ 208V
Water Connection	FNPT 1/2"
Water Drainage	FNPT 1"
Machine Dimension	15.75"W x 31.50"D x 20"H
Tank Dimension	12"W x 20"D x 13"H
Net Weight	66 lbs
Shipping Weight	75 lbs
Shipping Class	85



A - Water Inlet
B - Overflow Drain
C - Bottom Drain - 1" FNPT
D - High Water Level Sensor
E - Low Water Level Sensor
F - Electrical Connection - 230V 3PH 50/60HZ
G - Water Connection - 1" FNPT



ROUTED EDGE
15.984(406) x 31.732(806)
CUT DEPTH 0.393(10)
HOLE DIM. 15.354(390) x 31.1024(790)

NON ROUTED EDGE
HOLE DIM. 15.354(390) x 31.1024(790)

