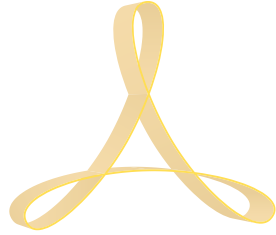


ELENA



ARCOBALENO™

# PASTA COOKER | ELECTRIC MODEL APCT24

ELECTRIC COUNTER TOP COOKER

Project: \_\_\_\_\_

Item #: \_\_\_\_\_

Qty: \_\_\_\_\_

CSI Section 11400: \_\_\_\_\_

Approval: \_\_\_\_\_

Date: \_\_\_\_\_



## STANDARD FEATURES

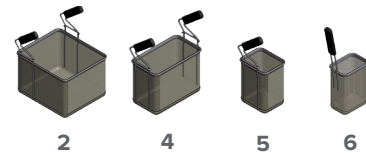
- Versatile pasta cooker; cook fresh, dry & frozen pastas plus... noodles, vegetables and more
- Stainless steel rounded corners rear backsplash construction - sanitary finish
- 316 stainless steel cooking tank
- 3 position temperature control
- Water safety sensor
- Counter top unit requires no water or drain connections - water is filled and drained manually
- Factory and on-location training—the only full-service pasta machine manufacturer in North America



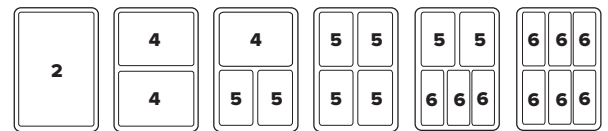
## OPTIONAL FEATURES & ACCESSORIES

- ☐ Variety of pasta basket options

### Pasta Basket Options



### Pasta Basket Combinations



### ■ WARRANTY

**One Year:** For more information visit [arcobalenollc.com/warranty.html](http://arcobalenollc.com/warranty.html)

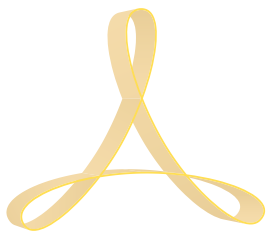


### ■ TRY BEFORE YOU BUY

In an effort to ensure success, we maintain a test kitchen where you can have your very own recipe tested for quality —at NO COST to you! Call for details.



*Specifications subject to change without notice due to policy of continuous product improvement.*



# PASTA COOKER | ELECTRIC

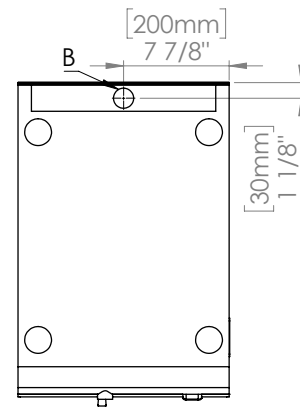
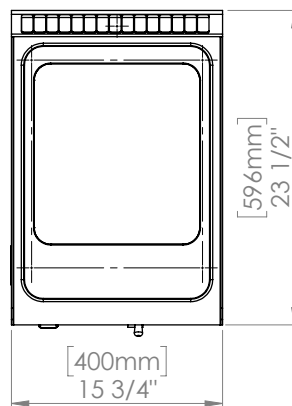
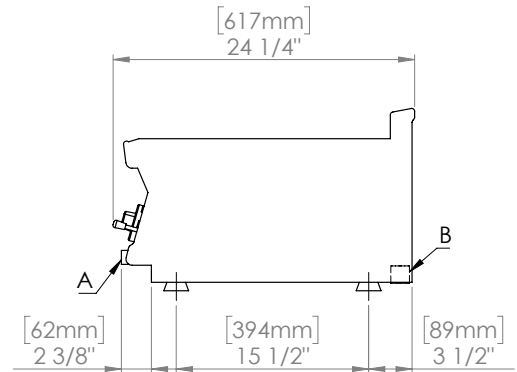
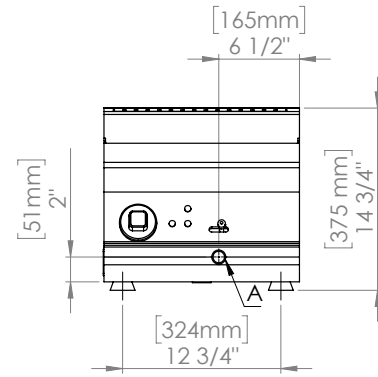
## MODEL APCT24

ELECTRIC COUNTER TOP COOKER

ARCOBALENO™

### TECHNICAL SPECIFICATIONS

Model	APCT24
Tank	1
Tank Volume	4.5 gallon
Tank Dimension	12"W x 13.25"D x 8.75"H
Power	220/1/60Hz 30 Amps
Water Drainage	1/2" O.D.
Nema Plug	L6-30P
Cord Length	6 ft
Machine Dimension	15.75"W x 23.75"D x 14.75"H
Shipping Dimension	17"W x 27"D x 24"H
Net Weight	60 lbs
Shipping Weight	75 lbs
Shipping Class	85



NOTES:  
A- WATER DRAIN, 1/2" O.D.  
B- ELECTRIC CONNECTOR, 220V 1PH 60Hz